

# Ethereal CS Matrix Series - URC Driver

## Release Notes

Current Version: v1.0.0

## Introduction

This driver has been designed to provide 1-way control of Ethereal CS Matrices via TCP/IP and RS232. The following features are supported:

- **General Commands:**
  - Basic Input/Output switching
- **Set Output Video Mode**
- **Set Output Image Enhancement**
- **Enable Output Ex-Audio**
- **Set Output Ex-Audio Delay**
- **Set Output Signal Generator**

## Driver Configuration

It is recommended that the Ethereal system be installed, configured and tested by a suitably qualified engineer, according to Ethereal's documentation, prior to integration with this driver.

## Adding the Drivers

There are four variations of the driver that can be installed:

- CS-44M (4x4 - RS232)
- CS-88M (8x8 - RS232)
- CS-44M (4x4 - IP)
- CS-88M (8x8 - IP)
- CS-44MHDBTS (4x4 - RS232)
- CS-88MHDBTS (8x8 - RS232)
- CS-44MHDBTS (4x4 - IP)
- CS-88MHDBTS (8x8 - IP)

To add the driver:

- Select a room to place to the driver
  - It doesn't really matter where this driver goes but it would make sense to locate it in the project where you have it physically in the installation.
- Choose **Program** -> 4. **Add Other Devices**.
- Ensure **Select Database** is set to **My**.
- Choose either **IP** or **RS232** database in **Select Module Type**
- Set Select Category to **MATRIX SWITCHES**.
- Choose **Ethereal** from the **Select Brand list**.
- From **Select Model** choose the desired driver.
- Click **Add Selected Modules** to add the device to the room.

## Configuring the Driver

The driver must be configured to properly support your devices.

## IP Address

The IP Address of the Ethereal matrix must be provided to the driver.

- Choose **Program** -> **6. Network Setup**.
- Select **Non URC Device** tab.
- For each instance of the driver, provide the correct IP address in the table.
  - Note that the port should be set automatically but for reference the correct port is **23**

[illegible]

## RS232 Settings

The RS232 settings are already defined in the driver, there is no need to manually configure them.

## Configure Inputs and Outputs

The driver can automatically switch between inputs and outputs if configured correctly.

Please ensure that you have installed the driver with the required number of inputs and outputs.



Choose **Program -> 7. AV Inputs and Outputs** to configure the inputs and outputs for the matrix.

To configure the **inputs**:

- Select the **Inputs** tab.

- Choose the desired **Ethereal** matrix from the **Select Device with Inputs** drop-down menu
- From the list of **Available Devices** drag each device you wish to configure as an input to the correct HDMI Input.

Step 7 / AVR and TV Connections: Assign AV Sources to

**Inputs**    Zone Assignment

Select Device with Inputs
 

CS-44MHDBTS(Utility)

Previous    Next

Available Inputs    Delete Selected

Input	Source	UI Zone Lock
HDMI 1		All
HDMI 2		All
HDMI 3		All
HDMI 4		All

To configure the **outputs**:

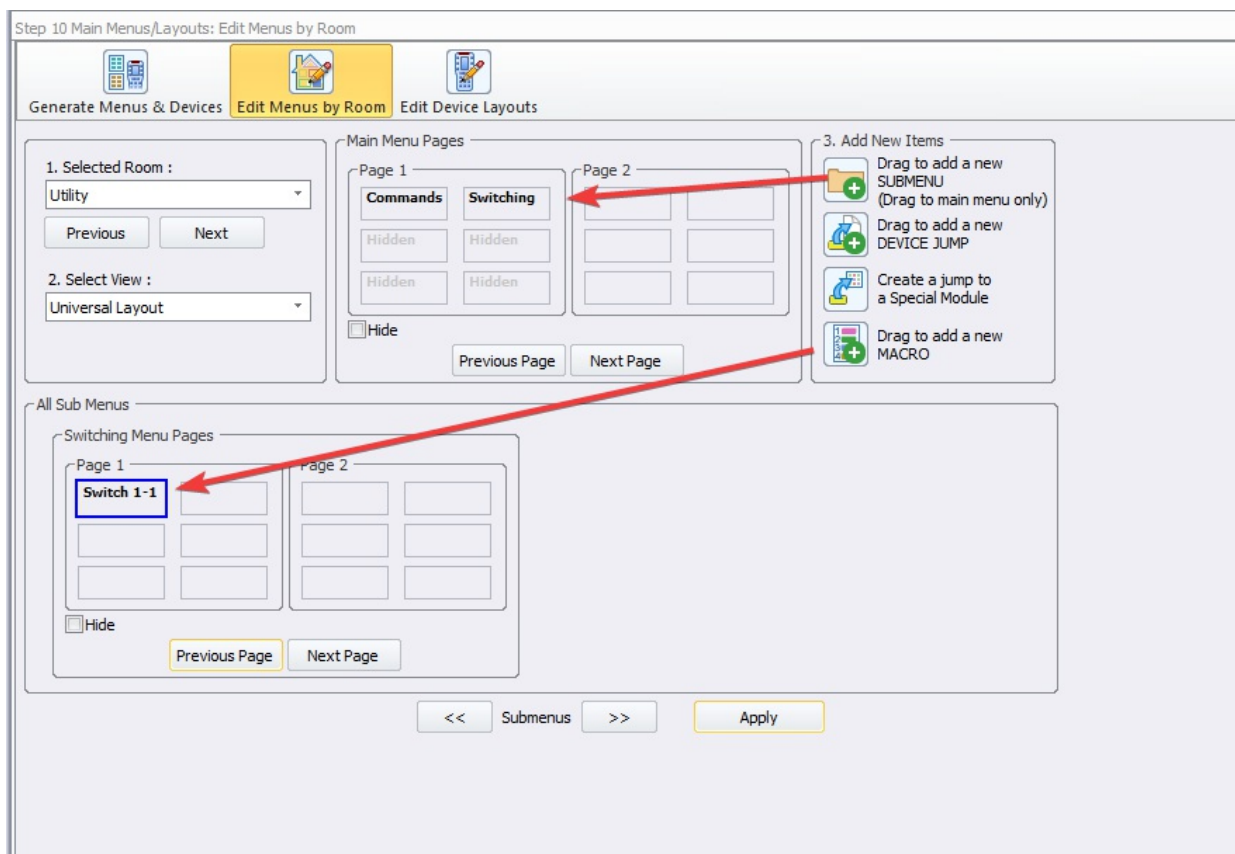
- Select the **Inputs** tab.
- Choose the device you wish to provide the **Ethereal matrix** device output to as an input from the **Select Device with Inputs** drop-down menu
- From the list of **Available Devices** drag the correct **Ethereal matrix** output to the

selected device HDMI input.

## User Interface

There is no built in user interface provided for this driver. However, you can configure buttons with attached macros that can be used to control the various functions of the driver:

- Choose **Program -> 10. Edit User Interfaces**
- Select the **Edit Menus by Room** tab
- Add a new sub menu to the main menu by dragging the option from the **3. Add New Items** panel into the **Main Menu** panel for the room where you wish this menu to appear
- You can double click on the name **Empty** to rename to something more appropriate
- In the sub menu section you can then drag the **new macro** option from the **3. Add New Items** panel into the sub-menu panel to add a new button

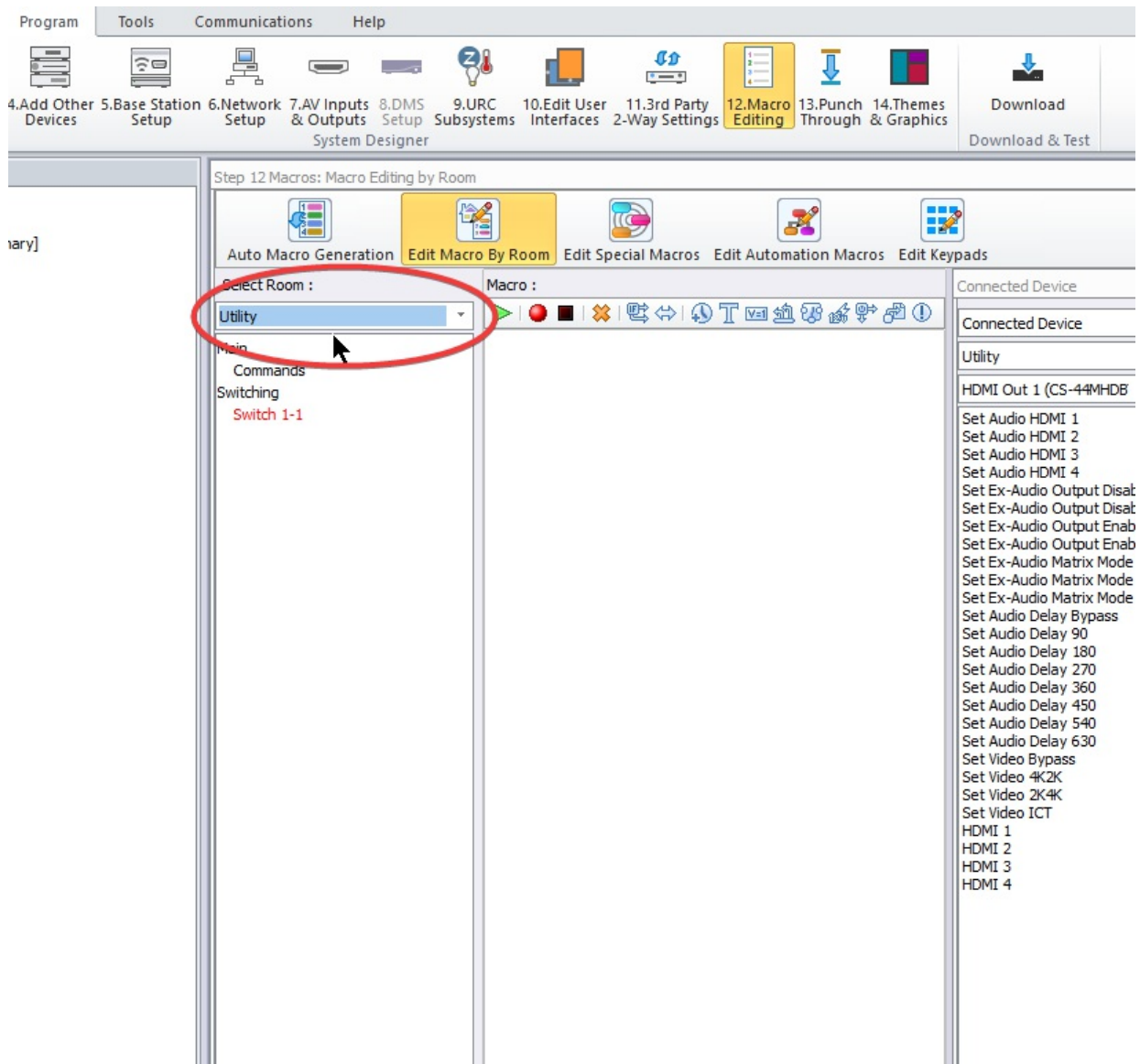


Once you have added all of the buttons you require you can assign macros to them - please see the next section for further details.

# Macros

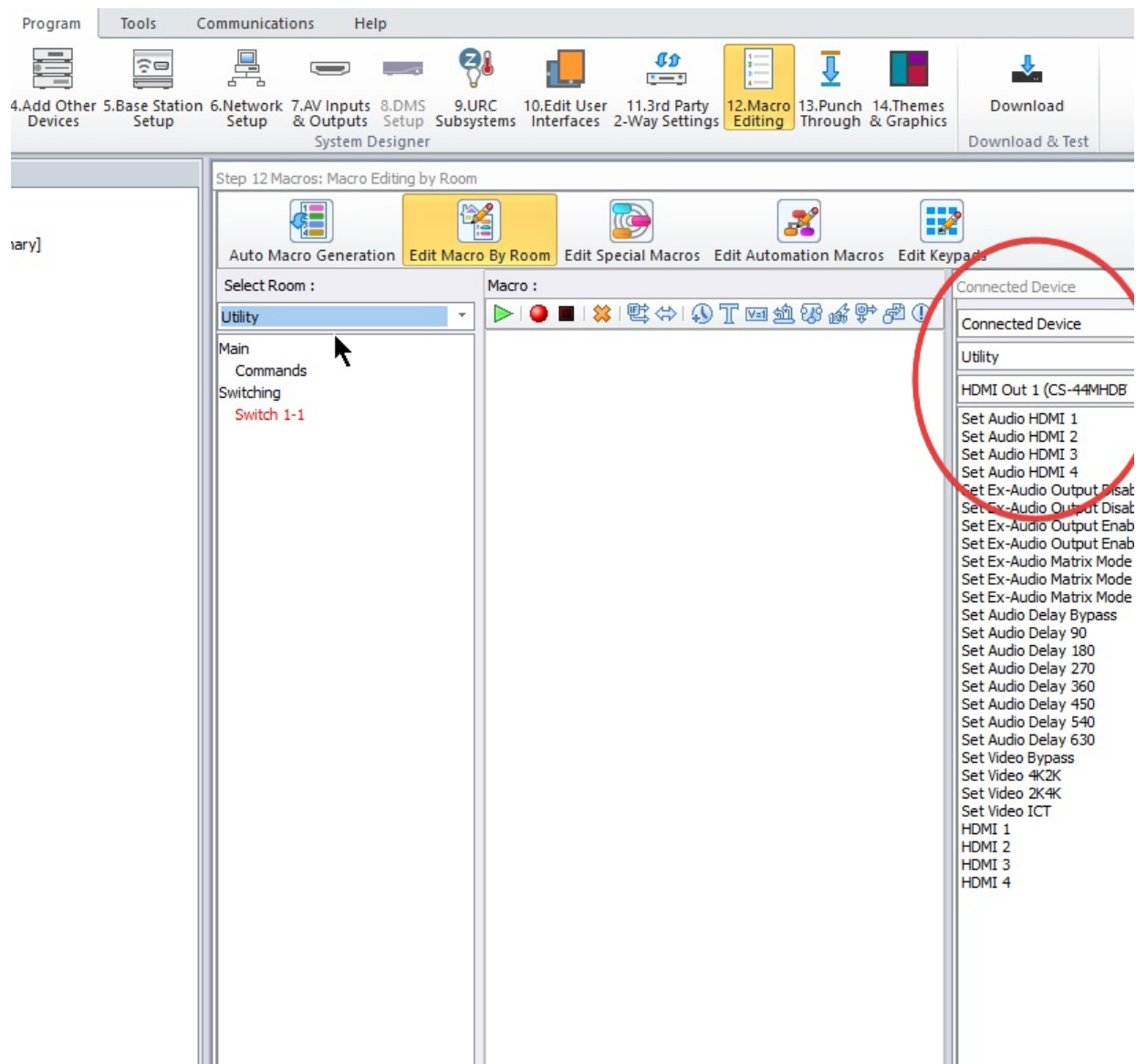
Ensure that system macros are generated for each instance of the driver by configuring **Program -> 12. Macro Editing** appropriately for your system.

You can view a list of user interface buttons that can be assigned macros by selecting the **Edit Macro By Room** tab and selecting the appropriate room from the drop down menu:

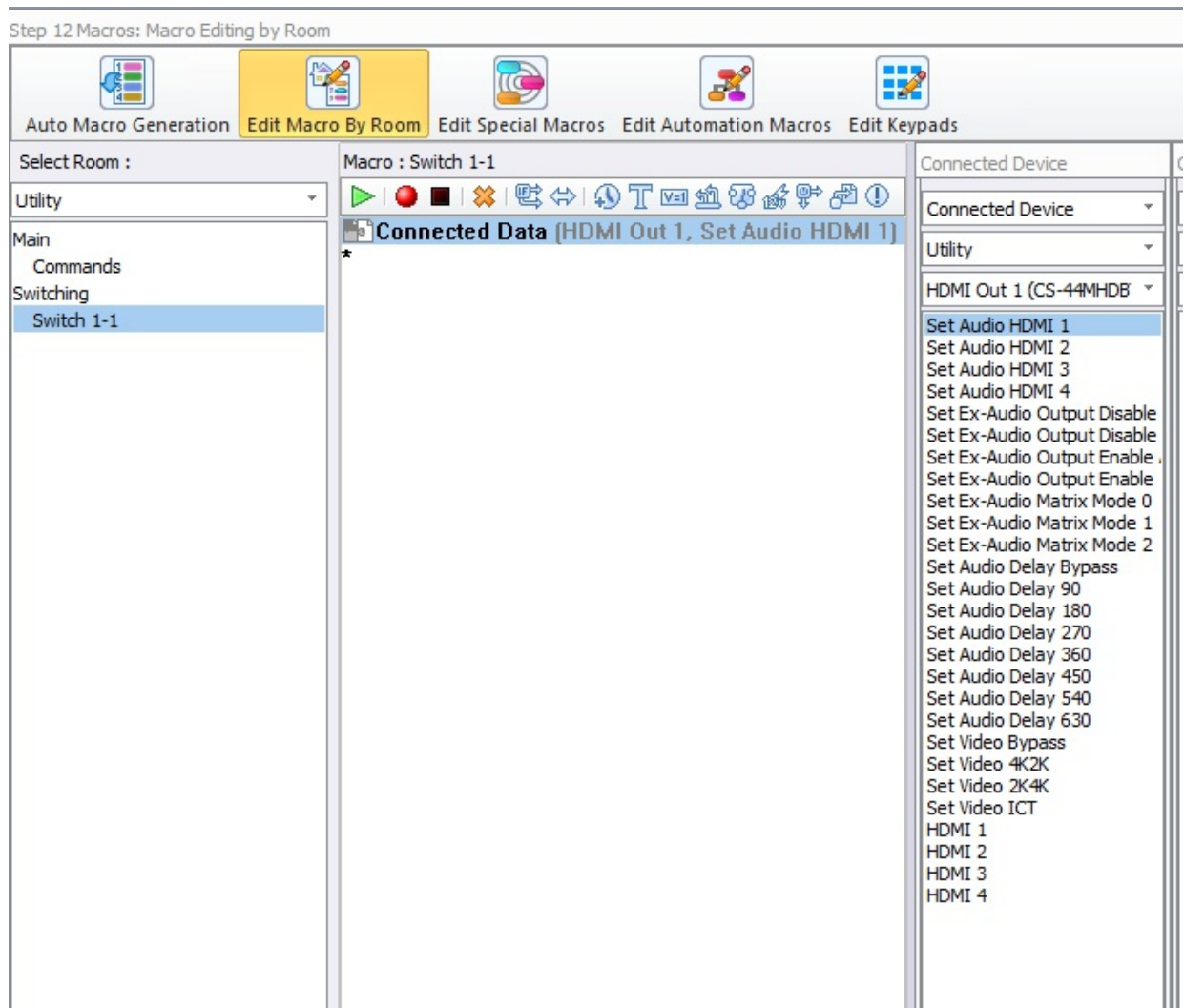


Buttons without actions assigned to them will be shown in **red**.

To add a command to an existing macro select **Connected Device** from the drop-down menu on a window to the right. Then select the desired **Room** from the next drop-down menu. Then select the **device** and its output you would like to add a command for. All the commands should be present now in the window:



To add the command, you must drag and drop it into the macro of choice:



## Commands

Command	Description
Set Output Video Mode	Set output video mode (Auto, Bypass, 4K->2K, 2K->4K, HDBT C Mode)
Set Output Image Enhancement	Set output image enhancement (Off, Weak, Medium, Strong)
Enable Output Ex-Audio	Enable / Disable Ex-Audio output
Set Output Ex-Audio Delay	Set output audio delay (Bypass, 90-630ms)
Set Output Signal Generator	Enables signal generator on specified output



# Downloading the Driver

Once you have configured the driver using the steps provided above you can now download the revised system configuration to your URC base station.