

SPY-NVR4POE / SPY-NVR4POEND SPY-NVR8POE / SPY-NVR8POEND

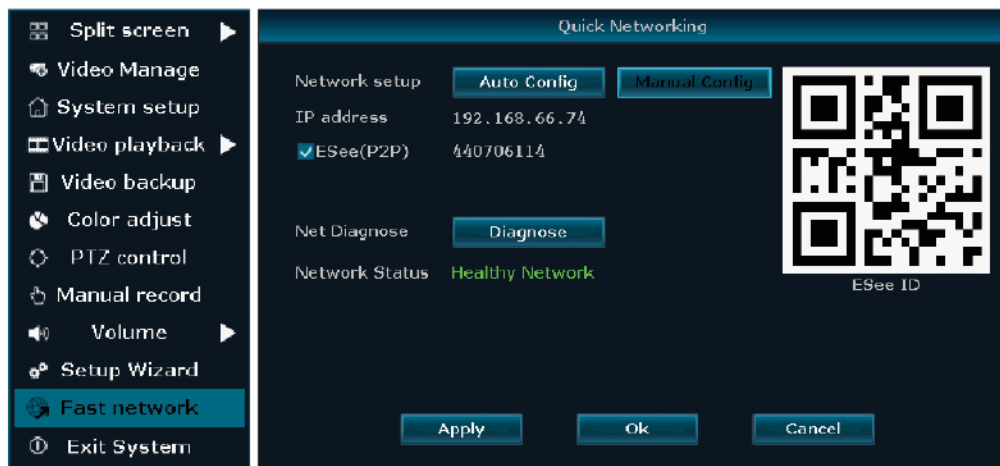


Tips: For user manual and future firmware updates, please go to <https://metrahometheater.com/spyclops-surveillance-systems.html> for download.

1 Fast Networking

Step: Right click mouse in main menu→fast networking→Choose Auto Config →Click OK

If want to manual config, input IP address, click diagnose. If NVR shows healthy network, make sure the connection to the network is good.



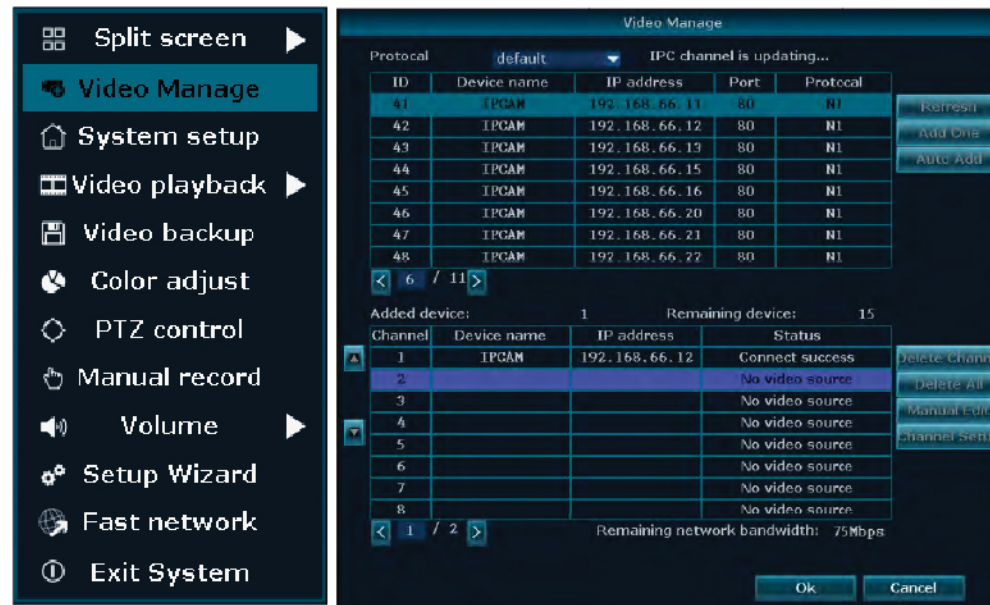
2 IPC Set UP

2.1 IPC Set UP

Step: Right click mouse→Click Video Manage→Click Refresh to search IPC→Two ways to add IPC

- (1) Click the IPC searched, then click add, IPC will add to target channel
- (2) Click Auto add(Auto add can add all the IPC searched to channel list)

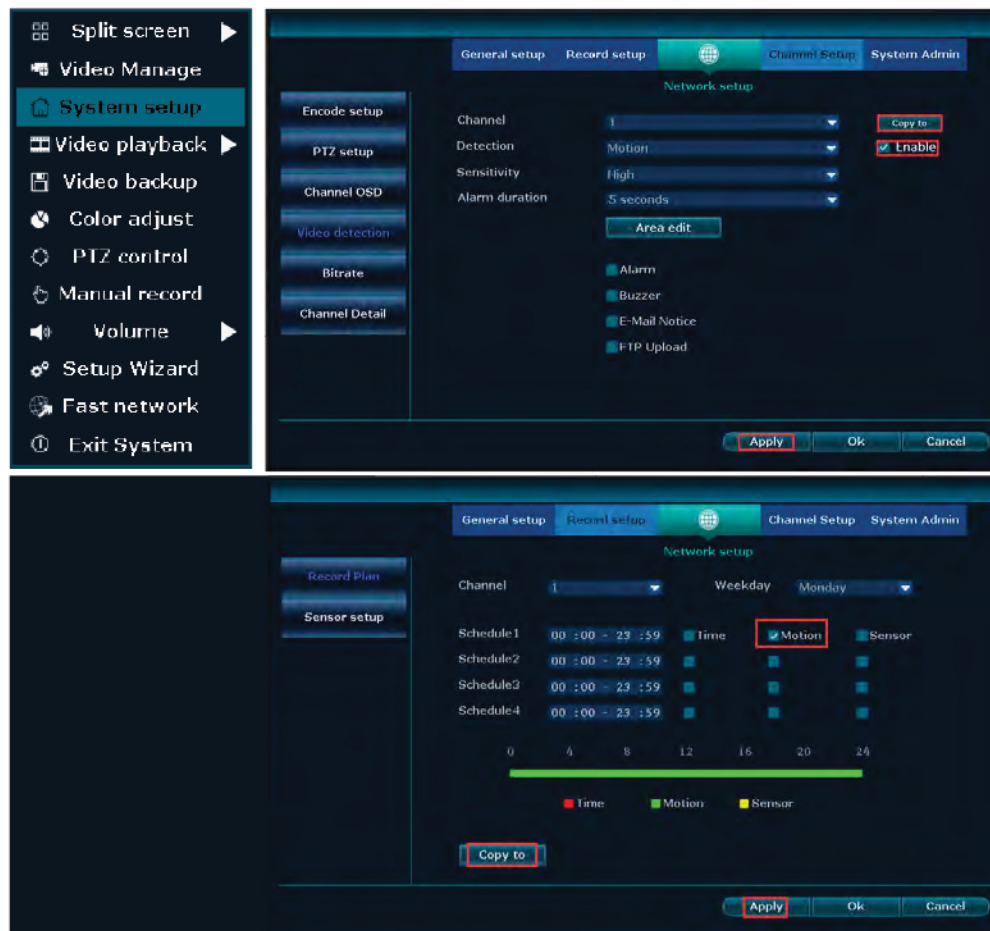
Delete channel: Delete channel information Edit channel: Manually revise channel parameters (such as password of user name) Click OK to finish operation.



3 Video Detection

Step 1: Right click mouse→System setup→Channel setup→choose Video detection→choose motion→click Enable→Click OK.

Step 2: Right click mouse→System setup→Record setup→Record plan→choose motion→choose all→click Copy to→click OK to save setting.

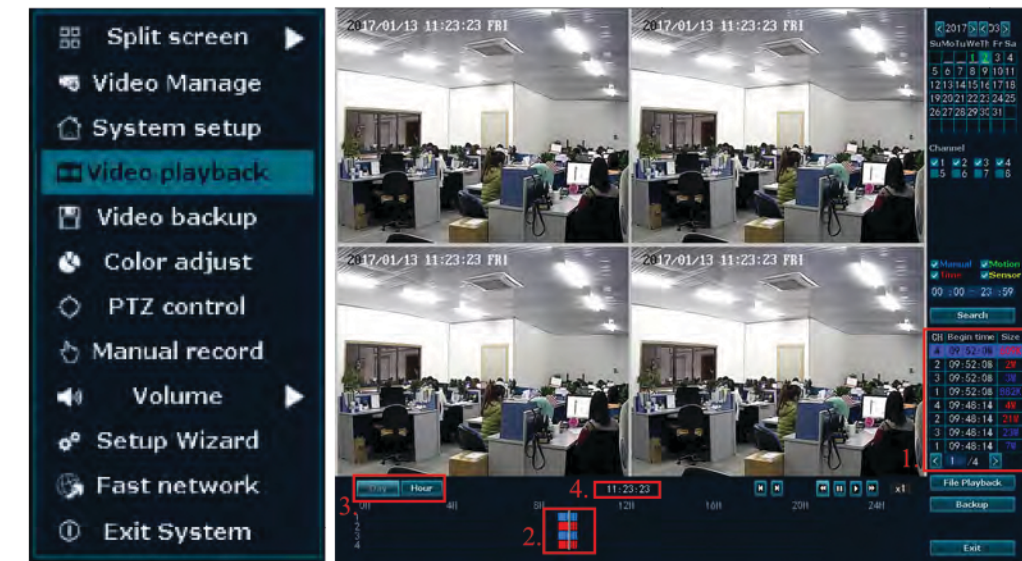


4 Video Playback

Steps: Right click→Video playback→choose date, channel, record mode-click search-then you can view playback file.

Warm prompt:

1. Illustration for playback button: ⏮ rewind; ⏪ playback previous seconds; ⏩ playback following seconds; ⏹ play; ⏸ pause; ⏭ fast forward x2,x4,x8
2. Play file: Choose the recording file in file list, as number "1" shown in picture. Choose one of the recording, click "play" to play to recording file;
3. Video backup: Choose the recording file in file list, as number "1" shown in picture. Insert a thumb drive, click "video backup" to backup the file;
4. Timeline: click "date" and "time" at left bottom to check the timeline of recording, show number "2" shown in picture; on the timeline with recording file, left click the mouse, then can playback the file.



5 Video Backup

Steps: Right click mouse→Video backup→choose channel No. →choose Record mode→In search time, input beginning time and end time →click search, recording will show→choose the video that needs to be backed up →click video backup.

Tips: Support 32G U disk backup maximum, recording file will be packed every one hour



6 Access In LAN

Step 1: Fast Networking→check the IP address of the device

Step 2: Access the computer in same LAN, input video recorder's IP address and port (if port is 80, no need to input) in IE browser or any other browser. Then it will access in LAN log in web page, input user name and password, click Login



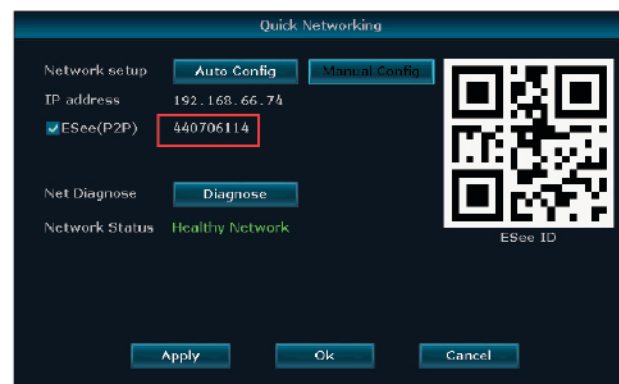
Step 3: Once access is successful, you can reach the video

Tips: Please make sure NVR and computer are in the same network segment



7 Access In WAN

Step 1: Right click mouse→Fast Networking→check the ID of the device



Step 2: Open the IE browser, enter the www.e-seenet.com in the address bar. Then it will access log in web page, input ID, user name and password, click login



Step 3: Once access successfully, you can view video



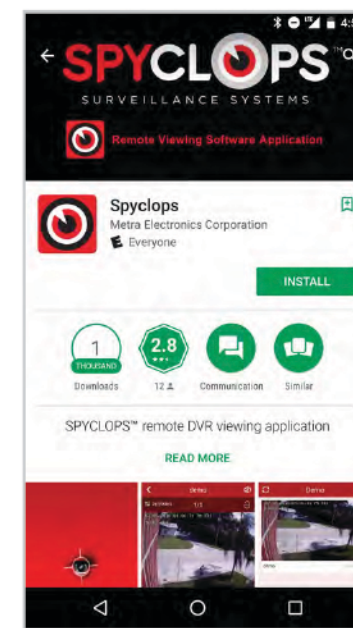
Tips: Video quality depends on the upload speed of the NVR and download speed of computer. Each channel needs above 30KB.

8 Mobile application download and installation

Search for "SPYCLOPS" on Apple APP Store or Google Play Store



iPhone APP



Google play APP

9 SPYCLOPS mobile APP - Add device

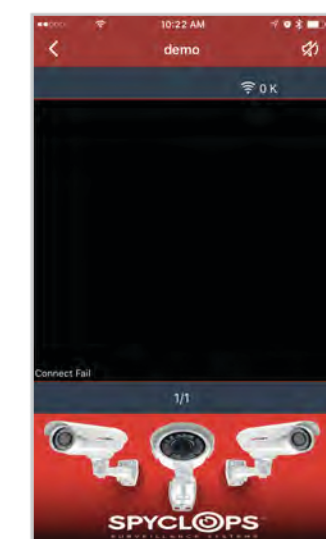
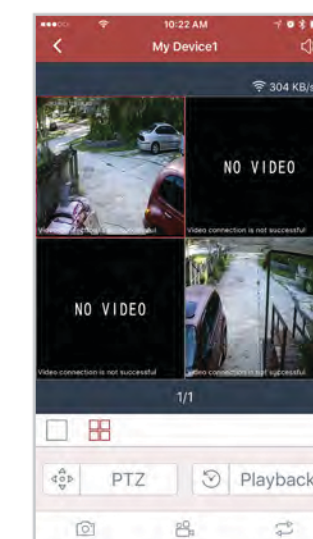
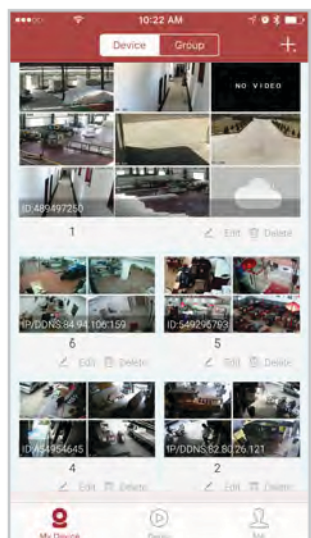
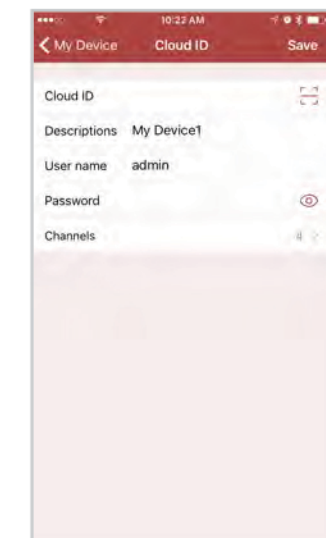
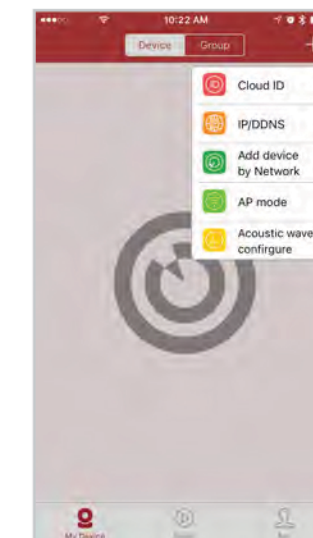
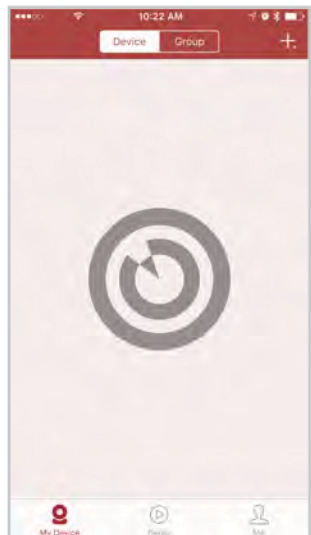
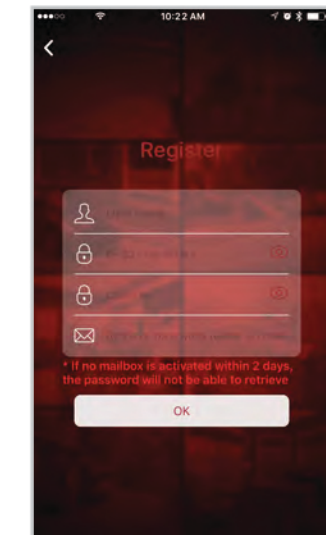
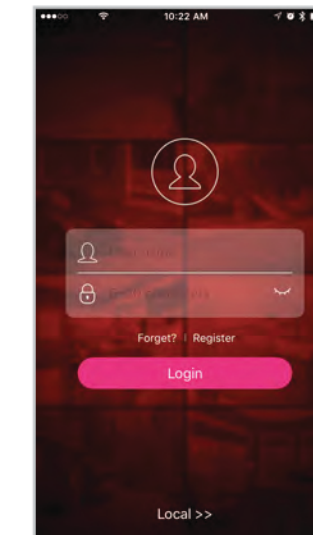
Step 1: Register

Step 2: Enter device interface

Step 3: Add device

Step 4: Added successfully. Click channel No.to get video

Step 5: Remote playback



MetraHomeTheater.com
866-839-9187
 460 Walker Street
 Holly Hill, FL 32117-2653
 ©2017 Metra Electronics Corporation
 Designed and Manufactured to
 Metra Home Theater Group Specifications
MADE IN CHINA