

## SPY-NVR4POEKIT1 SPY-NVR8POEKIT1

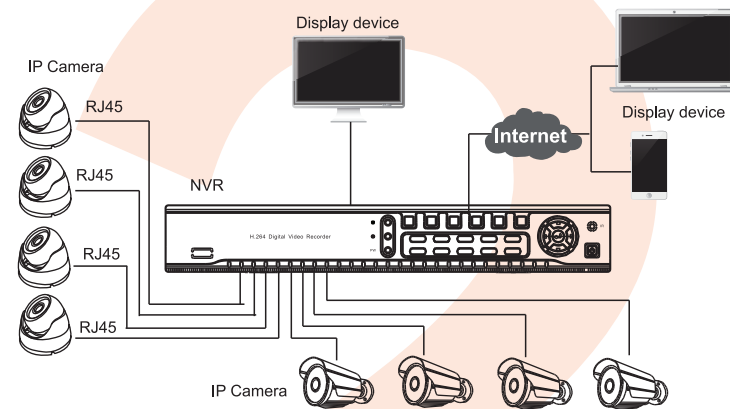


### Out Of Box Audit

After receiving the product, please check all products and access according to distributor's Package Includes information. If any is missed or damaged, please contact the distributor.

Packing list		
S/N	Item	Quantity
1	NVR	1 Pcs
2	HDD Pre-Installed	1 Pcs
3	USB mouse	1 Pcs
4	1 meter network cable (for IPC code match)	1 Pcs
5	DC power supply (for NVR)	1 Pcs
6	NVR user manual/Installation Instructor	1 Pcs
7	IP Camera	4/8 Pcs
8	Screw bag (for IPC)	4/8 Pcs

### IPC



### How to install

- Please use the provided cables to connect the cameras. If standard cables are damaged or users want to replace with new cables, please pay attention to the following points:
  - The cable length should not exceed the standard
  - Wire core diameter must be larger than 0.5mm
- Camera are powered by NVR directly, no switch used between IPC and NVR. Must be point to point connection.
- If you need to access NVR through network, please connect WAN port on NVR to the router (switch allowed).
- Once cameras are connected, image will show up without any settings on NVR (just like Analog DVR).

### Statement

- Thank you for purchasing our products. Please contact us with any questions or support needs.
- This manual is also suitable for network video recorder.

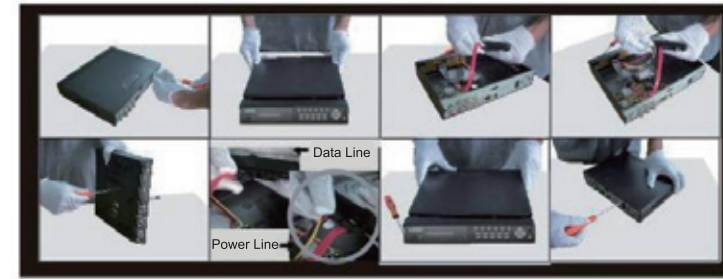
### Safety Caution

- Please do not put any fluid container on the product.
- Please use the product in ventilated environment and prevent blocking the vents.
- Please use included power supply with the product to prevent damage to the product.
- Please use the product under its standard working temperature and humidity (advised in this manual or distributor's website).
- Dust on PCB may cause short circuit. It is suggested to clean the dust on PCB timely to make product work properly.
- Please obey the regulation and policy in your country and area during the installation of this.

### HD Install

**Note:** Please use the specialized SATA HD recommended by the supplier, and make sure power off before installation. (HDD Preinstalled)

- Unscrew the cover of DVR ;
- Take off the cover ;
- Connect HD data wire ;
- Connect HD power wire ;
- Screw HD tight ;
- Make sure the connection of data wire and power wire is correct ;
- Put the cover back on DVR ;
- Fix the cover



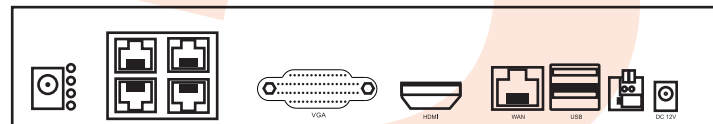
### User Login

Default user and password:

User:	Admin
Password:	
Default IP:	192.168.1.114

### Add cameras

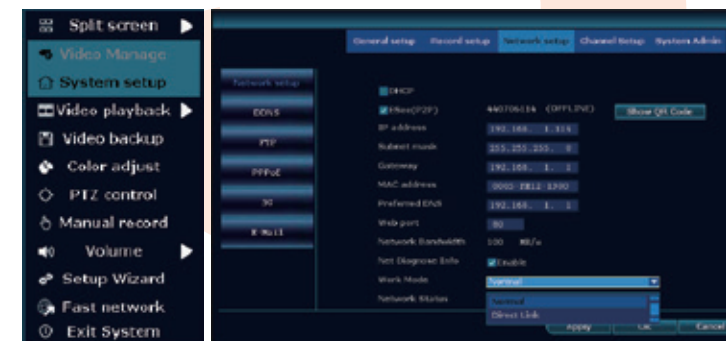
- Included cameras are plug and play, just need to be connected to network port and image will show up without any other operation.



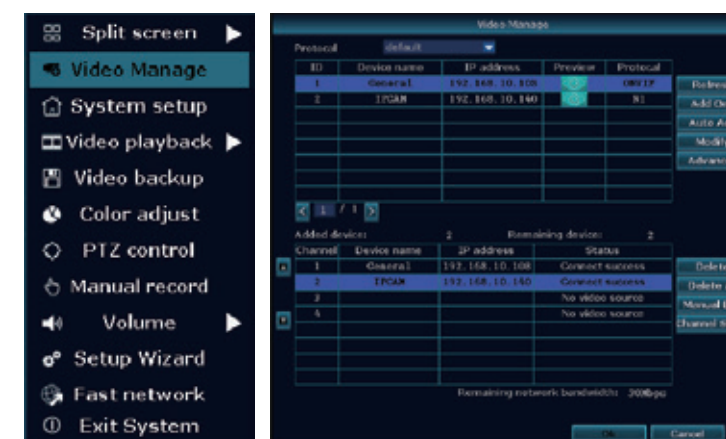
- Add cameras from other manufacturers

**Note:** Adding other cameras should choose common mode in "system setup" and should be added by manual searching.

**Steps 1:** Right click the main interface → System Setup → Network Setup → Work Mode, select "Normal", click OK. Then Device will reboot and enter into normal mode.



**Steps 2:** Right click the main interface → Video manage → Refresh → Add one → OK.

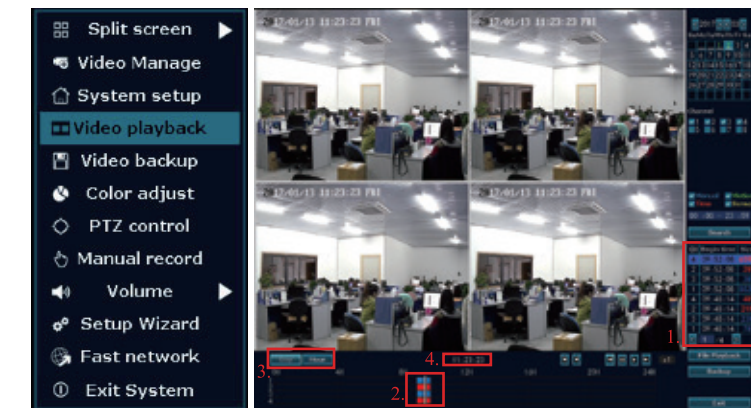


### Video Playback

**Steps:** Right click mouse in main menu → Video playback → choose date, channel, record mode → click Search → then can view playback file.

Warm prompt:

- Illustration for playback button:
  - rewind, playback previous seconds;
  - playback following seconds, play, pause;
  - fast forward x2, x4, x8;
- Play file: Choose the recording file in file list, as number "1" shown in picture. Choose one of the recording, click "play" to play to recording file;
- Video backup: Choose the recording file in file list, as number "1" shown in picture. Insert the U flash disk, click "video backup" to backup the file;
- Timeline: click "date" and "time" at left bottom to check the timeline of recording, show number "2" shown in picture;
- On the timeline with recording file, left click the mouse, then can playback the file.



### Video backup

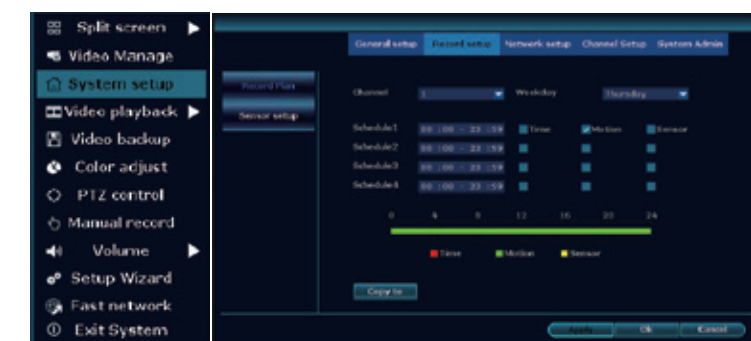
**Step:** Right-click on the main interface → "Video Backup" → Select Backup "Channel" → Set "search time" → Click "search" → select corresponding video → click the "Video Backup".

**Tips:** Support up to 32G U flash disk, video file packaged one time an hour.



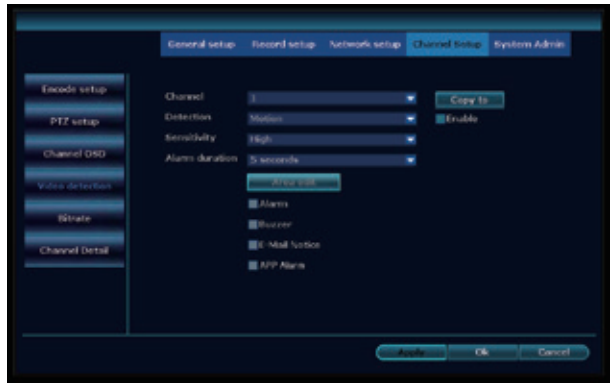
### Video detection

**Step 1:** Right click on the main interface → "System Setup" → "Record Setup" → "Record Plan" → check "motion" → select "All" → click "Copy to" → click "OK".



**Step 2:** Select "Channel Setup" → "video detection" → select "Sensitivity" according to demand → change detection type to "motion" → check "buzzer, alarm, E-mail" etc as needed → Click "Copy to" → click "OK".



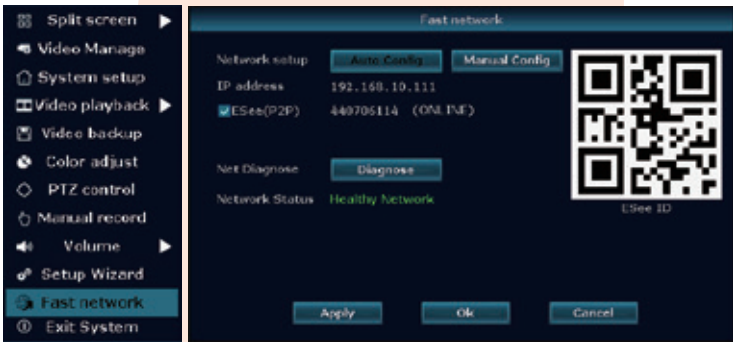


## Obtain Device ID (log onto NVR with computer on same router or same switch)

To obtain Device ID, we need to ensure that the device has been successfully connected to the router accessed the Internet.

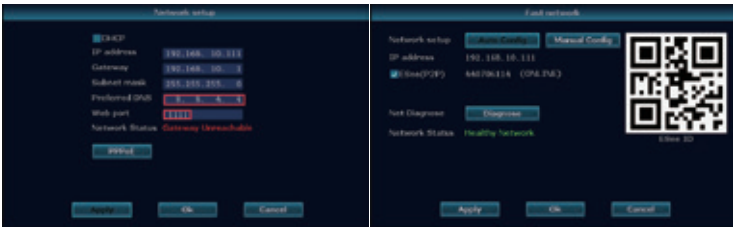
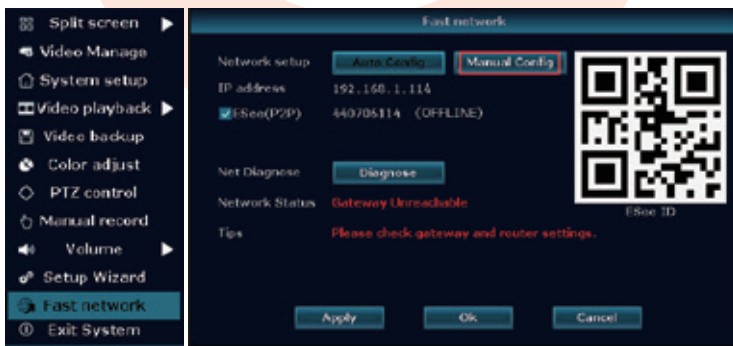
**Stps1:** Right click on the main interface →"Fast network".

**Stps2:** Click"Auto config", device will get the e-seenet ID automatically via internet after getting IP address.



**Note:** If it is not successful to automatically get the IP address , or it is successful to get the IP address but still can't connect network, please confirm the current network status, and we can use manual config.

**Stps3:** Select "Manual Configuration" to enter the interface. Manually fill in the IP address (it is on the same network segment with the router IP address ), gateway address (router IP address) and preferred DNS address (the server address analyzing DNS service, according to the address setting provided by the network operator.

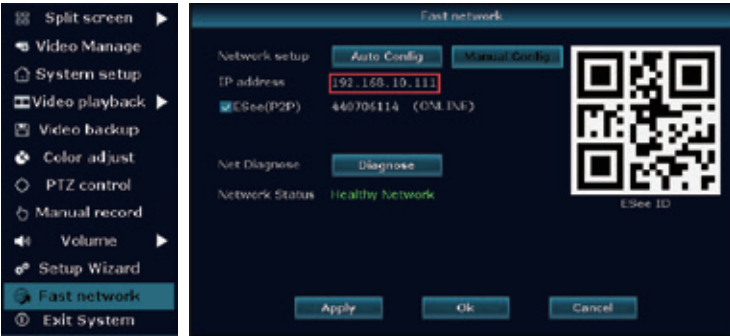


(**Note:** If it still can't connect network, please click diagnosis. Network status will prompt corresponding reason, then just operate according to the network status.)

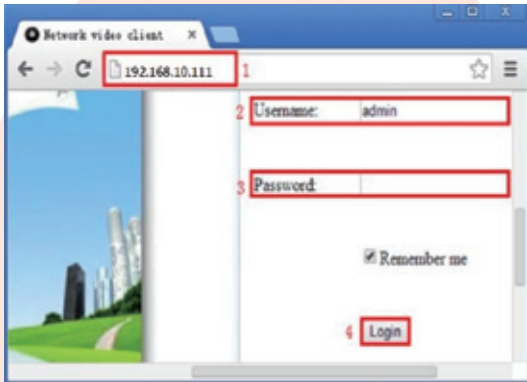
It will show the Device ID online if the device is connected to the internet successfully.

## Access in LAN

**Step 1:** Right click on the main interface and choose "Fast network"  
Please →check and write down the IP address.



**Step 2:** Access by computer in same LAN ,input video recorder IP address and port on IE or other browser (If port is 80, no need to input. Take the above picture for example, enter 192.168.10.108 at the address bar; if the web port is modified to port 1111, you need to enter 192.168.10.108:1111.) Then it will access LAN "log in "web-page. Input user name and password, click log in.



**Step 3:** Once successfully log in, users can get video and monitor.

**Tips:** Please make sure NVR and computer are in the same network segment.

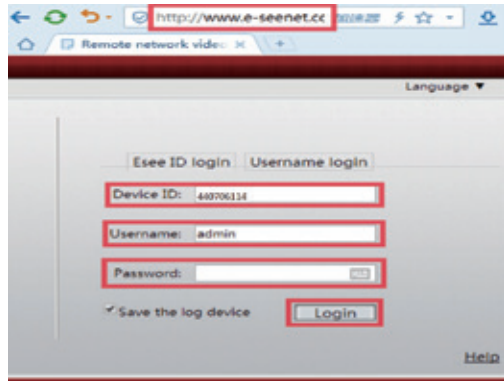


## Access in WAN

**Step 1:** Right click on the main interface and choose "Fast network"  
→ Please check and write down the device ID

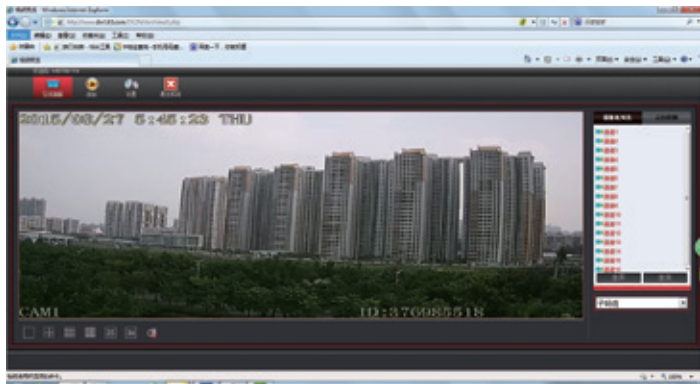


**Step 2:** Enter www.e-seenet.com in IE browser.Input ID NO,user name and password,click log in.



**Step 3:** Once access successfully, users can remotely check the video.

**Tips:** The fluency of the remote video is related to NVR upload bandwidth and download bandwidth of remote viewing side. Please make sure the bandwidth of each channel must be above 30KB.

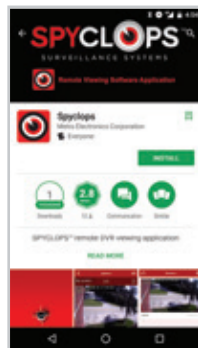


## Mobile application download and installation

1 Search for "SPYCLOPS" on Apple APP Store or Google Play Store



iPhone APP



Google play APP

## SPYCLOPS mobile APP - Add device

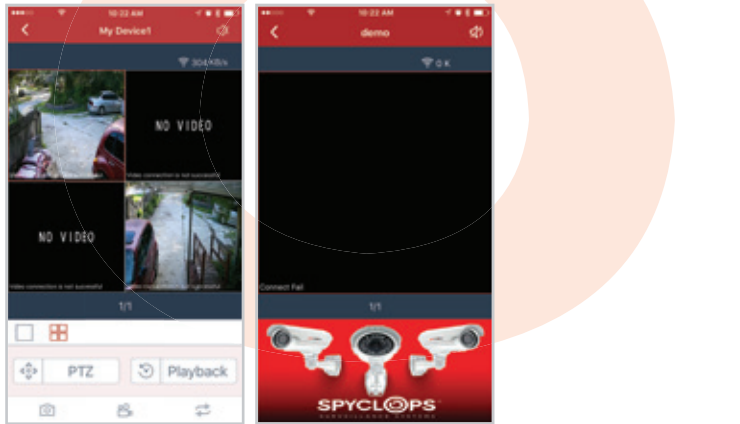
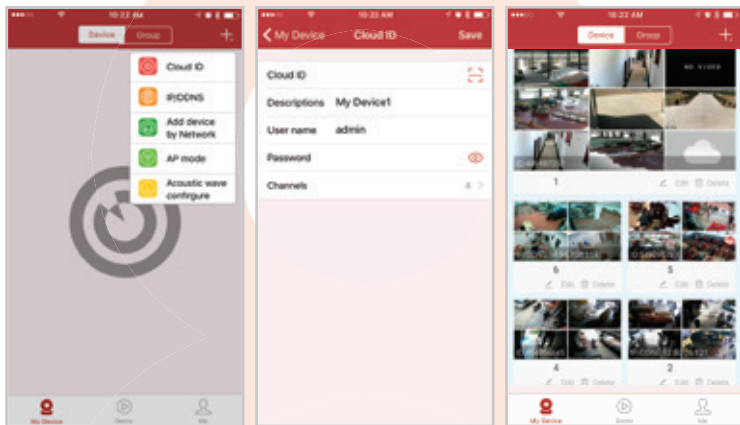
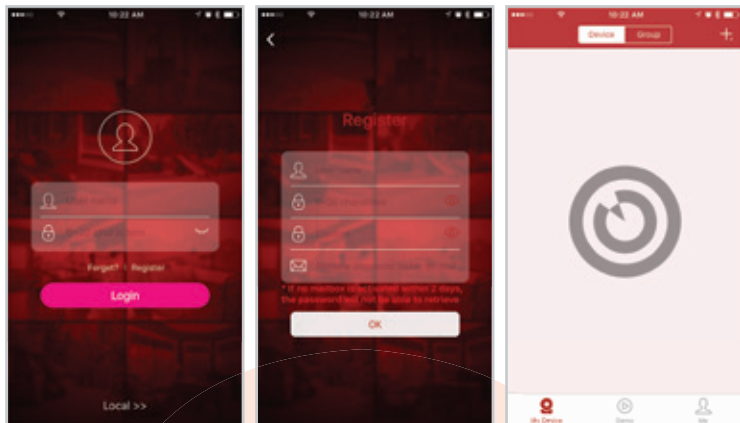
**Step 1:** Register

**Step 2:** Enter device interface

**Step 3:** Add device

**Step 4:** Added successfully. Click channel No.to get video

**Step 5:** Remote playback



**Notes:**

All man-made damage and the following terms and conditions are outside the scope of free warranty:  
A: Accident, negligence, natural disaster, misoperation;  
B: Inappropriate environment and conditions, such as improper power supply, wrong working temperature, lightning stroke;  
C: Products already maintained by unauthorized repair companies;  
D: Already beyond guarantee period.



MetraHomeTheater.com  
**866-839-9187**  
460 Walker Street  
Holly Hill, FL 32117-2653  
©2017 Metra Electronics Corporation  
Designed and Manufactured to  
Metra Home Theater Group Specifications  
**MADE IN CHINA**