

▶ Hardware description

1 Statement

Thank you for purchasing the Spyclops SPY-NVR4720W. Please contact Spyclops Tech Support if any problems arise with this unit. This user manual is for the Spyclops SPY-NVR4720W.

2 Safety Cautions

1. Do not put containers with liquid near and/or on NVR.
2. NVR should be placed in a well ventilated area for best results.
3. Use only the power supply designated for this NVR. All others may damage this unit.
4. NVR should only be installed in a temperature controlled environment.
5. Place this NVR on a flat, level surface. Avoid placing NVR on its side or on any moving surfaces.
6. For long term use of this NVR, owners may take the cover off the NVR and brush dust off of the PCB (printed circuit board). Dust and moisture can cause the circuit board to short circuit.

3 Open-package inspection

1. After purchasing your Spyclops SPY-DVR4720W, please open and remove the NVR. If you have any damaged and/or missing items, please contact your distributor.

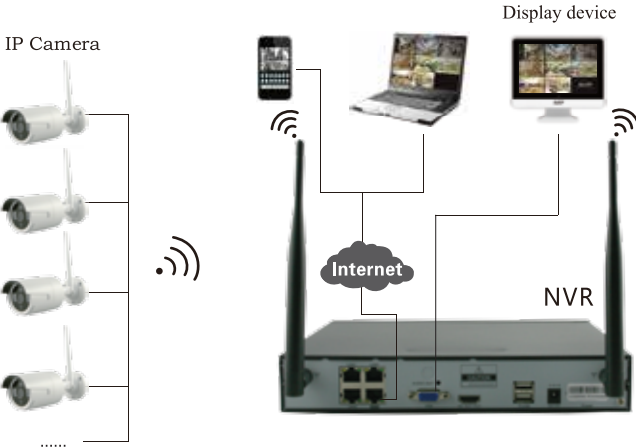
01

IPC Specification

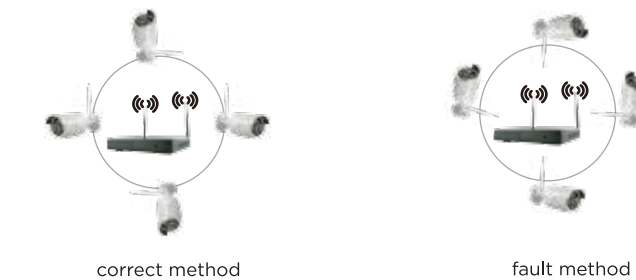
Operating System	Embedded linux
Image Sensor	1/4" Progressive Scan Sensor
S/N Ratio	> 39.1 dB
Resolution	1280 x 720 16 : 9 High Definition
Minimum Illumination	Color: 0.1 Lux B/W: 0.01 Lux
Lens	4mm
OSD	Date Time & Title
White Balance	Auto
Day & Night	Auto / Color / BW
3D-DNR	Auto
Mirror/Flip	On / Off
Privacy Masking	4 Zone Selectable
Frame Specification	Three Streaming at the Same Time: H.264 128x720@30fps or below H.264 640x480@30fps or below
Anti-thunder Level	Standard IEC61000-4-5
Power Input	DC12V-1A
Consumption	≤6W
Interface	RJ45 / WIFI 802.11b/g/n
Working Temperature/Humidity	-10 C° to +50 C° / 30% to 80% RH
Storage Temperature/Humidity	-20 C° to +60 C° / 20% to 90% RH
Size	205(L)×70(W)×55 (H)mm
Weight	500g

05

4 Installation Diagram



5 Antenna Location



02

▶ Software operation

1 Add camera by matching code

Steps:

- Right click on the blank main screen
- Click "System Setup"
- Click "Channel Setup"
- Click "Quick Adding", "Video Manage" will then pop up.

There are two ways for the wireless NVR to add IPC:
- "Code Add" and "Auto Add"

Code Add

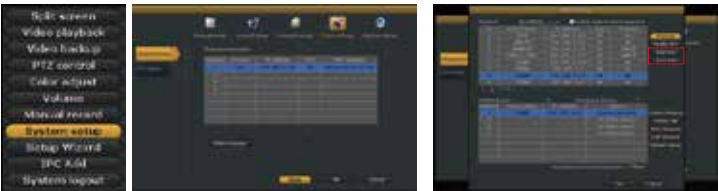
- Camera transmits the video via wireless to the NVR.
- IP is 172.20.14.X

Auto Add

- Camera transmits the video via ethernet cable to the NVR.
- IP is 172.25.123.X

Note:

The cameras have been preconfigured for the NVR, no need to add additional cameras.



2 Video Playback

Steps:

- Right click on the Main Menu
- Click "Video Playback", Click Channel number, Click "Record Mode"
- In the "Search Time", input the beginning and end time.
- Click "Search". Recordings will populate.
- Drag time bar to specific area and click "Playback" to start.

Tips: Playback icon introduction: playback 1 frame previous playback 1 frame next play pause fast forward x2,x4,x8

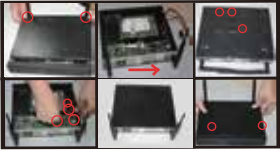
06

The signal coverage of the antennas are similar to a circle. Keep all camera antennas parallel with NVR's antennas as shown in the antenna location diagram. According to the signal divergence characteristics of the antennas, and in order to guarantee the Spyclops video quality, cameras antennas must be installed as shown in antenna location diagram.

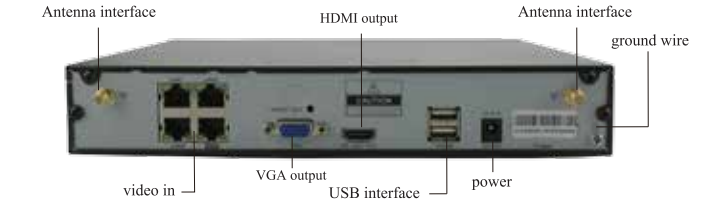
6 Hard Drive Install (All NVR's come with a preinstalled 1 TB hard drive. This section is only for those who would like to upgrade the hard drive.)

Install Steps:

1. Unplug and remove power supply from NVR and let sit for 5 minutes.
2. Remove all screws from the shell and remove the lid.
3. Unplug the SATA cable from hard drive and remove all screws on the bottom of the NVR holding the hard drive in-place. Place new hard drive in place of the old hard drive and reconnect the SATA cable and all screws on bottom of the NVR.
4. Place the lid back onto the NVR and place all screws back into its proper place.
5. Place power back to the NVR and power the unit back on.



7 Rear Panel Descriptionion



03

8 Turn on/off

Before powering up the NVR, make sure the correct power supply is connected. Also, make sure that the power outlet has a good middle ground. After checking the power connections, power on the NVR. If the power light on the NVR is flashing, this means the unit is running properly.



3 Video Backup

Steps:

- Right click on the Main Menu
- Click "Video Backup", Click Channel number, Click "Record Mode"
- In the "Search Time", input the beginning and end time.
- Click "Search". Recordings will populate.
- Click the video that needs to be backed up, Click "Video Backup"

Tips:

- Supports 32G USB disk backup & recordings will backed up every hour.



4 Video Detection

Step 1:

- Right click on Main Menu
- Click "System Setup", Click "Record Setup"
- Choose Motion, Choose All, Click "Copy To, Click "OK" to save settings

Step 2:

- Choose "Video Detection", Set sensitivity as required
- Choose "Motion", Set Alarm, Buzzer or Email as required.
- Click "Copy To", then click "OK" to save settings.



07

9 NVR, IPC Parameter List

NVR parameter			
Operating System	Embedded linux OS		
AV(audio/video)input	Network Video	4CH	
	Network video input broadband	20Mbps	
AV (audio/video) output	HDMI input	1ch, resolution: 1024x768, 1366x768, 1440x900,1920x1080p	
	VGA output	1ch, resolution: 1024x768, 1366x768, 1440x900,1920x1080p	
AV CODEC	Video Resolution	D1/720P/960P	
Specification	synch-playback	4CH	
Video Control	Video/Capture mode	Maual、Time、Motion、Alarm	
	Playback mode	Real time、Routine、Event	
	Backup	USB backup	
HDD	Type	1*SATA interface	
	Max Capacity	4 TB at most for each	
External Interface	Network Interface	1 adaptable RJ45 10M/100M, 2 WIFI interface	
	USB Interface	2 USB 2.0	
Network Control	Protocol	UPnP (play&plug) 、SMTP (email service) 、PPPoE (dial-up) 、DHCP (Automatically obtain an IP address) , etc...	
Others	Power	DC 12V 3A	
	Consumption(excluding HDD)	≤5W	
	Working Temperature	-10 C°—55 C°	
	Working Humidity	10%—90%	
	Size	257×210×45mm	
	Weight (excluding HDD)	≤1Kg	

04

5 Generate Esee ID

To populate the ESEE ID, make sure NVR is connected with the network and IP is available.

Steps:

- Right click in Main Menu
- Click “System Setup”, Click “Network Setup”

Note: If the user is familiar with LAN, they will not need to choose DHCP. Manually input the IP address and DNS address. The NVR will generate the ID via the network. Once generated, ID will appear in the menu.



If the user is NOT familiar with LAN, or if the NVR is in an independent network, they can choose the DHCP to get the available IP address. Once NVR gets the IP address, the NVR will populate the ESEE ID automatically.



6 Access in LAN

Step 1:

- Right click in Main Menu
- Click “System Setup”, Click “Network Setup”, Check the NVR IP address

Step 2:

- Access by a computer in the same LAN
- Input NVR IP address and port (If port is 80, no need to input port) in IE browser or any other browser. Access the LAN log in webpage, input user name and password and click log in. Once access is successful, you can now get video.

Tips:

- Make sure that the NVR and computer are in the same network segment.

11 Esee Mobile Application (Eseenet) - Function Introduction

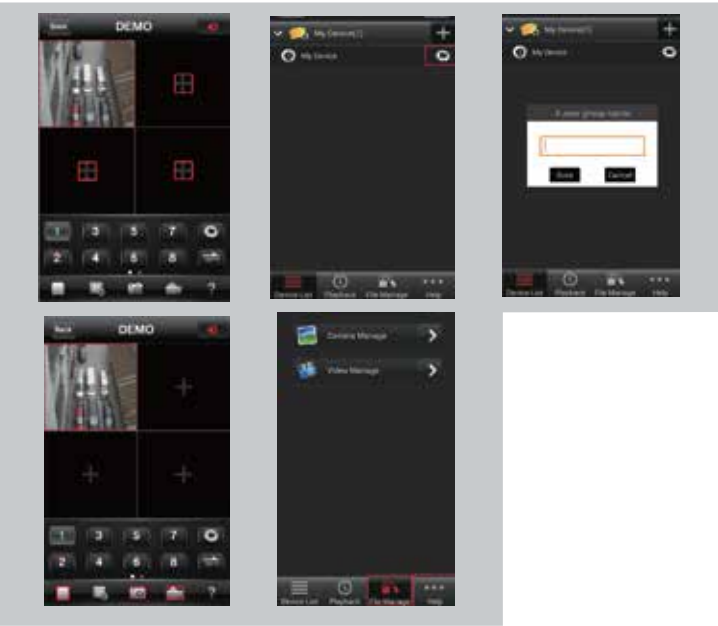
Step 1: This app will connect to channel ‘1’ video by default, click “+” to add more channels

Step 2: Click this icon to edit NVR's log in information

Step 3: Add device group

Step 4: Play/Pause/Snapshot/Record

Step 5: File management and more settings



7 Access in LAN

Step 1:

- Right click on Main Menu
- Click “System Setup”,Click “Network Setup, Check NVR IP address

Step 2:

- Access via computer in WAN. Input www.e-seenet.com in IE browser or any other browser. Once you have access, log into the website. Input ID, user name and password and click log in. Once access was successful, you will see video.

Tips:

- Video quality depends on the NVR’s up speed and the computers down speed. Each channel needs 30KB or above.

Access by computer not in same router with video recorder



Packing list

S/N	Item	Quantity
1	NVR	1pcs
3	USB mouse	1pcs
4	1 meter network cable (for IPC code match)	1pcs
5	DC 12V3A power supply (for NVR)	1pcs
6	NVR user manual · Installation Instructor	1pcs
7	PE4010-W IP Camera	4 pcs
8	DC 12V2A power supply (for IPC)	4 pcs
9	Screw bag (for IPC)	4 pcs

Notes:

1. Device will not be covered under warranty due to following reasons:

- Accident, negligence, disaster and/or mis-operation.
- Improper installation in wrong environment and conditions. Such as improper power, working temperature is too hot or too low, lightning strikes, etc.
- Was maintained/repaired by company other than Authorized by Metra Electronics.
- Items older than warranty coverage period.



8 Android Mobile Application Download & Install

NO. 1:

Step 1: Go to Play store

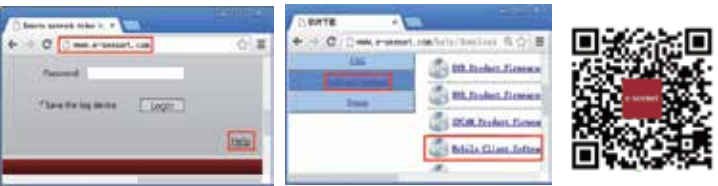
Step 2: Search for Eseenet

Step 4: Click download

NO. 2:

Scan QR code with your smartphone, click download to mobile once you are directed to the download page.

Two ways to download



9 iPhone Application Download & Install

Step 1: Go to APP store

Step 2: Search for Eseenet

Step 3: Input APP ID password

Step 4: Click download



10 Esee Mobile Application (Eseenet) - Add Device

Step 1: Log into Eseenet application, click “+” icon

Step 2: Enter the device edit page

Step 3: Input NVR's log in information

Step 4: If added successfully, the app will show on the screen

Step 5: Click the channel number to access the video



866.839.9187

460 Walker Street, Holly Hill, FL 32117

www.spyclopsusa.com