

# SPYCLOPS™

SURVEILLANCE SYSTEMS

## SPY-NVR8720W

### Users Manual



# **Hardware description**

## **1 Statement**

Thank you for purchasing the Spyclops SPY-NVR8720W.  
Please contact Spyclops Tech Support if any problems arise with this unit.  
This user manual is for the Spyclops SPY-NVR8720W.

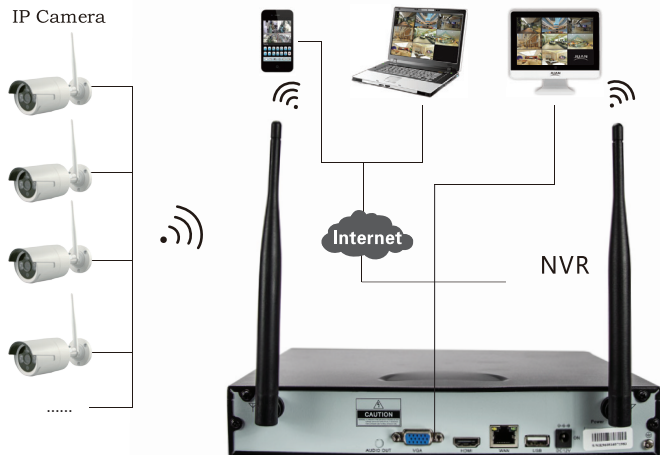
## **2 Safety Cautions**

1. Do not put containers with liquid near and/or on NVR.
2. NVR should be placed in a well ventilated area for best results.
3. Use only the power supply designated for this NVR. All others may damage this unit.
4. NVR should only be installed in a temperature controlled environment.
5. Place this NVR on a flat, level surface. Avoid placing NVR on its side or on any moving surfaces.
6. For long term use of this NVR, owners may take the cover off the NVR and brush dust off of the PCB (printed circuit board). Dust and moisture can cause the circuit board to short circuit.

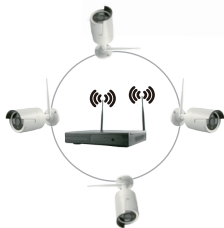
## **3 Open-package inspection**

1. After purchasing your Spyclops SPY-DVR8720W, please open and remove the NVR. If you have any damaged and/or missing items, please contact your distributor.

## 4 Installation Diagram



## 5 Antenna Location



correct method



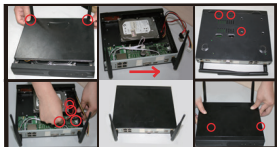
fault method

The signal coverage of the antennas are similar to a circle. Keep all camera antennas parallel with NVR's antennas as shown in the antenna location diagram. According to the signal divergence characteristics of the antennas, and in order to guarantee the Spyclops video quality, cameras antennas must be installed as shown in antenna location diagram.

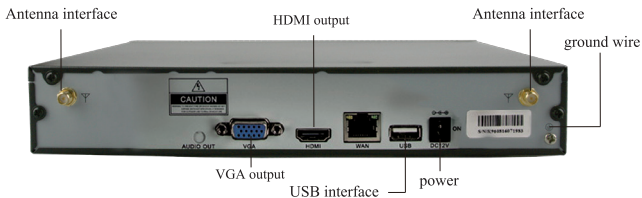
## 6 Hard Drive Install (All NVR's come with a preinstalled 1 TB hard drive. This section is only for those who would like to upgrade the hard drive.)

### Install Steps:

1. Unplug and remove power supply from NVR and let sit for 5 minutes.
2. Remove all screws from the shell and remove the lid.
3. Unplug the SATA cable from hard drive and remove all screws on the bottom of the NVR holding the hard drive in-place. Place new hard drive in place of the old hard drive and reconnect the SATA cable and all screws on bottom of the NVR.
4. Place the lid back onto the NVR and place all screws back into its proper place.
5. Place power back to the NVR and power the unit back on.



## 7 Rear Panel Description



## 8 Turn on/off

Before powering up the NVR, make sure the correct power supply is connected. Also, make sure that the power outlet has a good middle ground. After checking the power connections, power on the NVR. If the power light on the NVR is flashing, this means the unit is running properly.

## 9 NVR, IPC Parameter List

NVR parameter			
Operating System	Embedded linux OS		
AV(audio/video)input	Network Video	8CH	
	Network video input broadband	20Mbps	
AV (audio/video) output	HDMI input	1ch, resolution: 1024x768, 1366x768, 1440x900,1920x1080p	
	VGA output	1ch, resolution: 1024x768, 1366x768, 1440x900,1920x1080p	
AV CODEC	Video Resolution	D1/720P/960P	
Specification	synch-playback	8CH	
Video Control	Video/Capture mode	Manual、Time、Motion、Alarm	
	Playback mode	Real time、Routine、Event	
	Backup	USB backup	
HDD	Type	1*SATA interface	
	Max Capacity	4 TB at most for each	
External Interface	Network Interface	1 adaptable RJ45 10M/100M, 2 WIFI interface	
	USB Interface	2 USB 2.0	
Network Control	Protocol	UPnP (play&plug) 、SMTP (email survice) 、PPPoE (dial-up) 、DHCP (Automatically obtain an IP address) , etc...	
Others	Power	DC 12V 3A	
	Consumption(excluding HDD)	≤5W	
	Working Temperature	-10 C —55 C	
	Working Humidity	10%—90%	
	Size	257×210×45mm	
	Weight (excluding HDD)	≤1Kg	

**IPC Specification**

Operating System	Embedded linux
Image Sensor	1/4" Progressive Scan Sensor
S/N Ratio	> 39.1 dB
Resolution	1280 x 720 16 : 9 High Definition
Minimum Illumination	Color: 0.1 Lux B/W: 0.01 Lux
Lens	4mm
OSD	Date Time & Title
White Balance	Auto
Day & Night	Auto / Color / BW
3D-DNR	Auto
Mirror/Flip	On / Off
Privacy Masking	4 Zone Selectable
Frame Specification	Three Streaming at the Same Time: H.264 128x720@30fps or below H.264 640x480@30fps or below
Anti-thunder Level	Standard IEC61000-4-5
Power Input	DC12V-1A
Consumption	≤6W
Interface	RJ45 / WIFI 802.11b/g/n
Working Temperature/Humidity	-10 C to +50 C / 30% to 80% RH
Storage Temperature/Humidity	-20 C to +60 C / 20% to 90% RH
Size	205(L)×70(W)×55 (H)mm
Weight	500g

# ▶ Software operation

## 1 Add camera by matching code

### Steps:

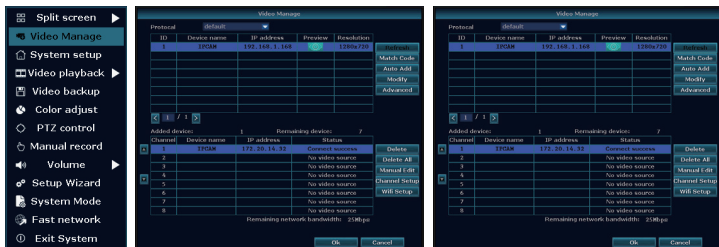
Right click on the mouse to open menu options.

- Click Video Manage to enter Video Management interface.

There are two ways for the NVR to add IPC, "Code Add" and "Auto Add". When adding cameras by matching code, the camera transmits video images wirelessly to NVR, IP is 172.20.14.X;

When Auto Adding the camera, the camera transmits the video images via the Ethernet cable to the NVR;

**NOTE:** The cameras have been matched by the factory, no need to add other cameras. If you need to do a Match Code, first, take your Ethernet cable and connect to the camera and then connect to the NVR. Then follow steps above.



## 2 Video Playback

Step 1: Right click on mouse.

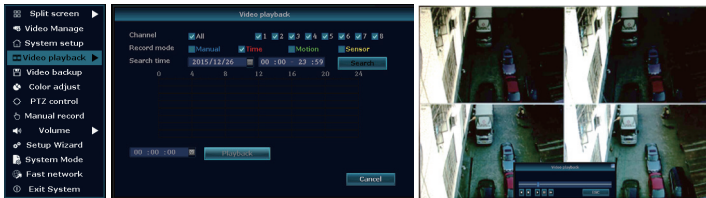
Step 2: Click Video Playback

Step 3: Choose channel number, choose record mode.

Step 4: In Search Time, input your start time and ending time.

Step 5: Click playback to start.

**Tips:** Playback icon introduction: playback 1 frame previous playback 1 frame next play pause fast forward x2,x4,x8



### 3 Video Backup

Step 1: Right click on mouse.

Step 2: Click Video Backup

Step 3: Choose channel number, choose record mode.

Step 4: In Search Time, input your start time and ending time.

Step 5: Choose which video needing to be backed up and click video backup.



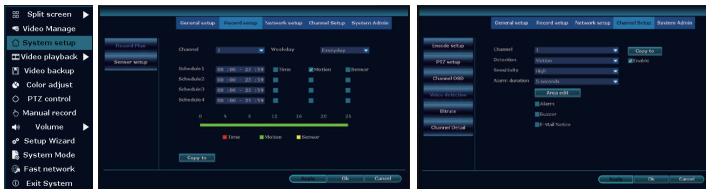
### 4 Video Detection

Step 1:

- Right click on mouse.
- Click System Setup
- Click Record Setup
- Choose motion, choose 'ALL', click 'Copy To', click 'OK' to save settings.

Step 2:

- Click on Video Detection
- Set sensitivity as required, choose motion, set alarm buzzer or Emil as required.
- Click Copy To then click OK to save your settings.





## 5 Generate Esee ID

In order to view your cameras from a mobile device and/or computer, you must connect the NVR to a router. By following the steps below will generate your Esee ID number.

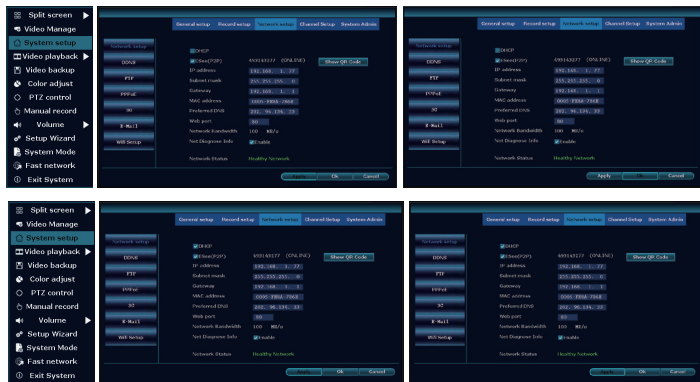
Step 1: Right click on mouse.

Step 2: Click System Setup

Step 3: Click Network Setup

Step 4: Check the DHCP box, click OK to save settings.

Once you have completed the steps Right click, got to Shut Down and reboot your NVR.



## 6 Access in LAN

Step 1:

Right click on mouse, click System Setup, click Network Setup, check video videorecorder IP address.

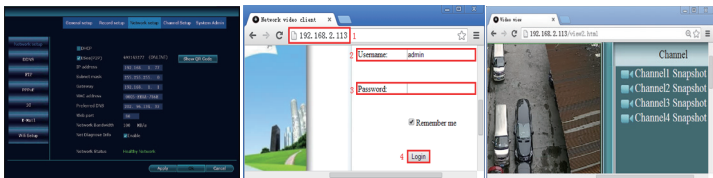
Step 2:

Access by computer by LAN, input video recorders IP address in Internet Explorer (ORIGINAL).

Step 3:

Input user name and password and click Login.

**TIPS:** Make sure both NVR and computer are on the same Network!



## 7 Access in LAN

Access by computer not in same router with video recorder

### Step 1:

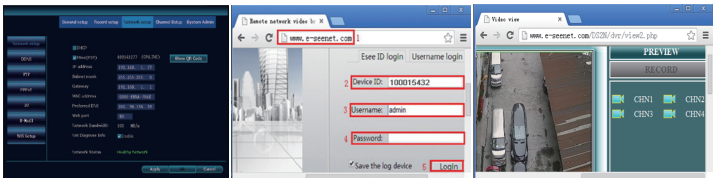
Right click on mouse, click System Setup, click Network Setup, check video recorder IP address.

### Step 2:

Enter [www.e-seenet.com](http://www.e-seenet.com) in browser.

### Step 3:

Input Esee number, user name and password and click login.



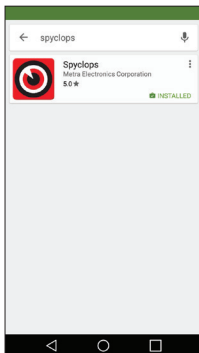
## 8 Android Mobile Application Download & Install

### NO. 1:

Step 1: Open Play Store

Step 2: Search for “SPYCLOPS”

Step 3 Download & Install



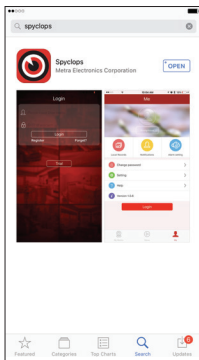
## 9 iPhone Application Download & Install

Step 1: Open APP store

Step 2: Search for “SPYCLOPS”

Step 3: Input Apple ID & Password

Step 4: Download & Install

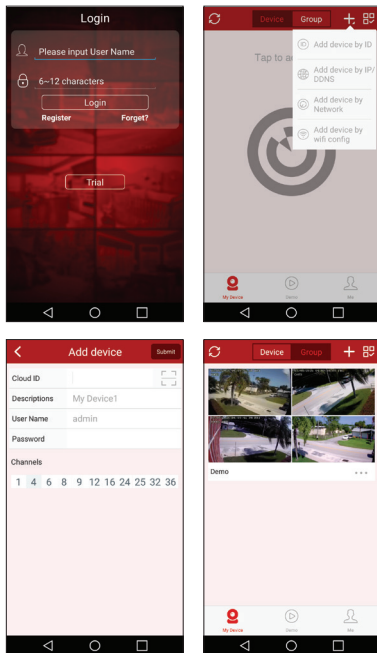


## 10 Spyclops Application –Setup

Step 1: Register User name & Password with APP (Optional) or use Trial for single phone use

Step 2: Click + icon in upper right & select “Add device by ID”

Step 3: Enter 9 Digit ID in Cloud ID, Title for Device in Descriptions, User Name & password of DVR and select Submit. Note: If using Trial method, DVR channel total must be selected prior to selecting Submit.



## 11 Spyclops Application – Functions

Step 1: Tap preview grid of desired device

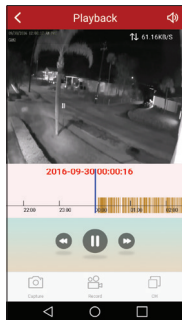
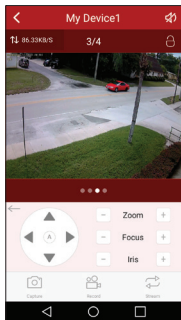
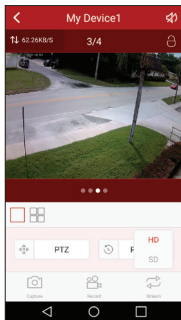
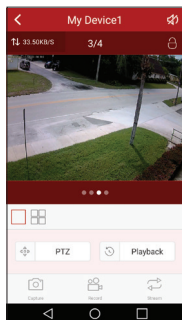
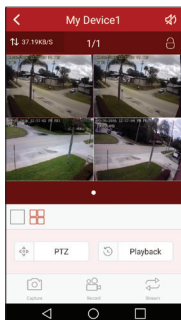
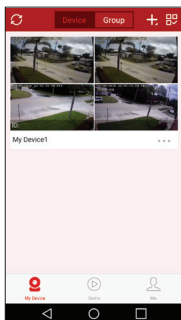
Step 2: View Device and select camera view options

Step 3: Double tap any single camera for full screen

Step 4: Select Stream icon to adjust for SD or HD stream quality

Step 5: PTZ control for Pan Tilt Zoom cameras

Step 6: Playback – Select desired channel and slide to time to search for playback



## Packing list

S/N	Item	Quantity
1	WIFI NVR	1pcs
2	Screw bag (4 screws for HDD)	1pcs
3	USB mouse	1pcs
4	1 meter network cable (for IPC code match)	1pcs
5	DC 12V2A power supply (for NVR)	1pcs
6	NVR user manual \ Installation Instructor	1pcs
7	WIFI IP Camera	8 pcs
8	DC 12V/1A power supply (for IPC)	8 pcs
9	Screw bag (for IPC)	8 pcs
<b>10</b>	Antenna Extension Cord	<b>1/2</b> (4CH/8CH) pcs

### Notes:

**1. Device will not be covered under warranty due to following reasons:**

- a. Accident, negligence, disaster and/or mis-operation.
- b. Improper installation in wrong environment and conditions. Such as improper power, working temperature is too hot or too low, lightning strikes, etc.
- c. Was maintained/repaired by company other than Authorized by Metra Electronics.
- d. Items older than warranty coverage period.





**866.839.9187**

**460 Walker Street, Holly Hill, FL 32117**

**[www.spyclopsusa.com](http://www.spyclopsusa.com)**